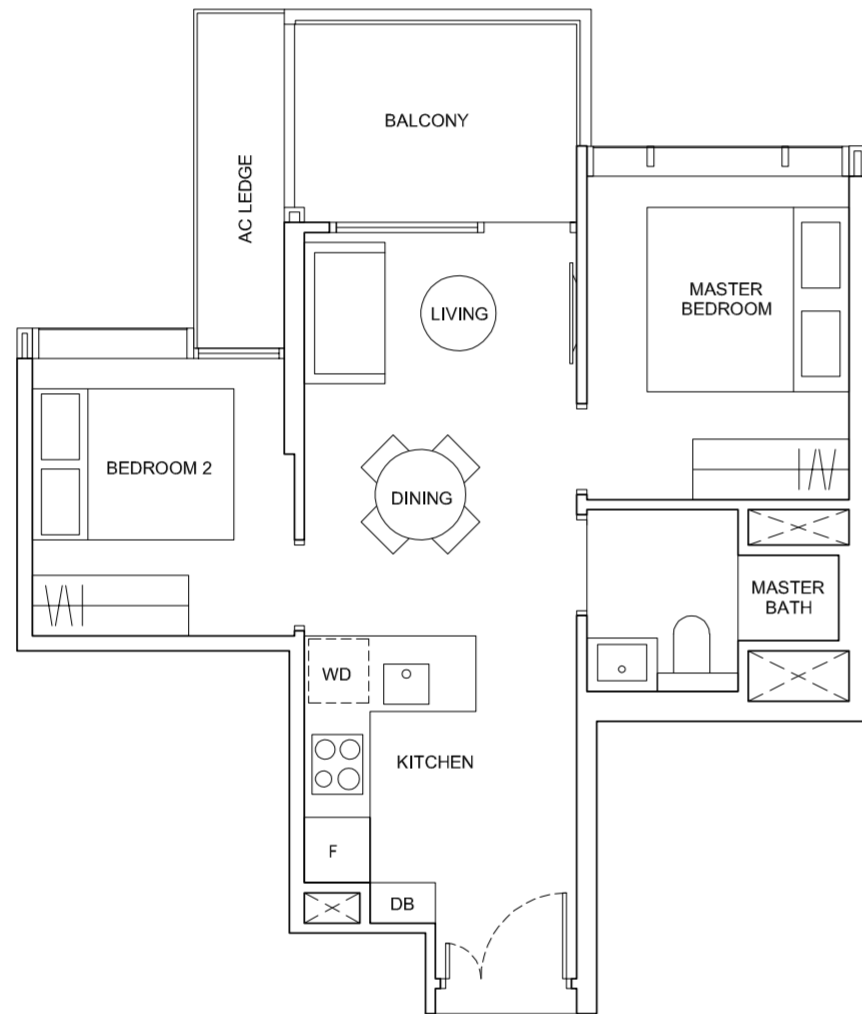


2 - BEDROOM SUITE

TYPE A1

53 sqm / 570 sqft

#02-06 to #12-06



2 - BEDROOM SUITE

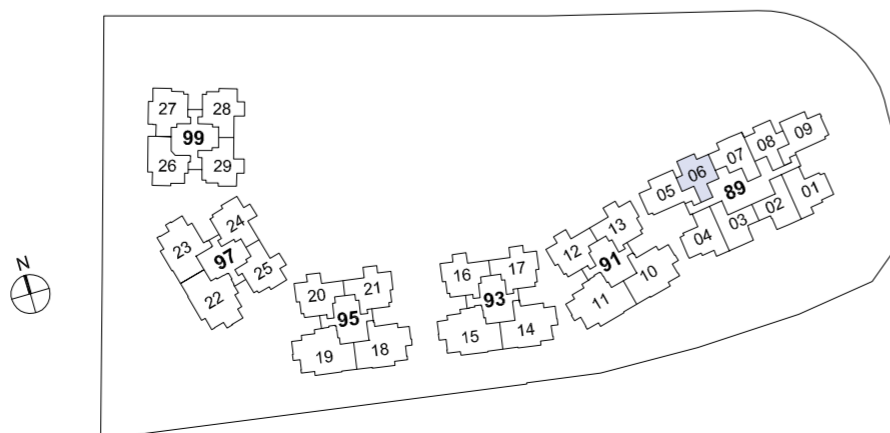
TYPE A2

53 sqm / 570 sqft

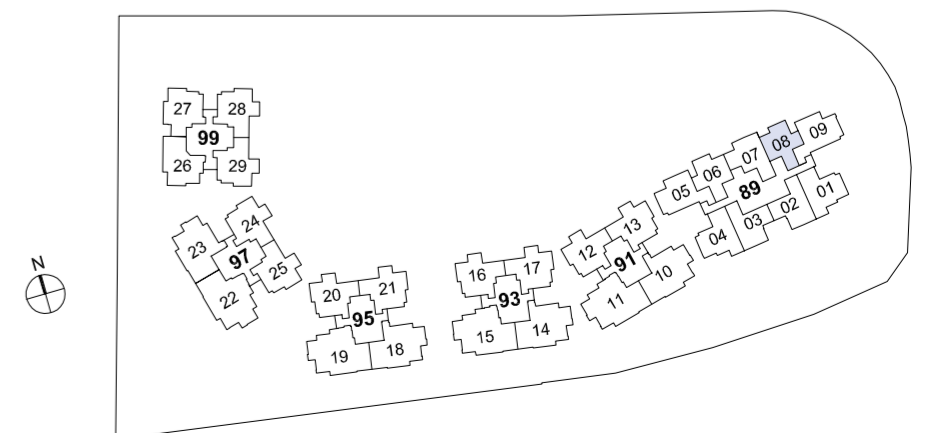
#02-08 to #12-08



showflat +65 61002500



The plans are subjected to change as may required or approved by the relevant authorities. Areas are estimates only and subject to final survey. Plans are not drawn to scale and do not form part of the contract.



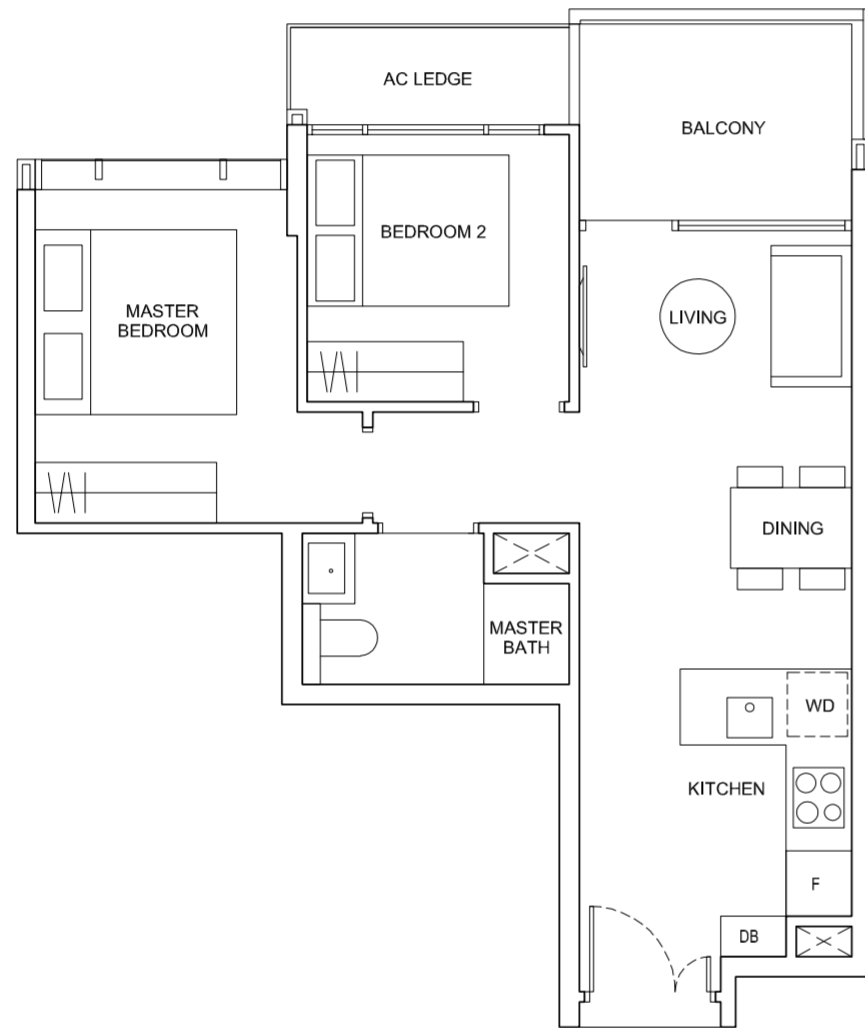
The plans are subjected to change as may required or approved by the relevant authorities. Areas are estimates only and subject to final survey. Plans are not drawn to scale and do not form part of the contract.

2 - BEDROOM SELECT

TYPE B1

56 sqm / 603 sqft

#02-07 to #12-07



2 - BEDROOM SELECT

TYPE B2

57 sqm / 614 sqft

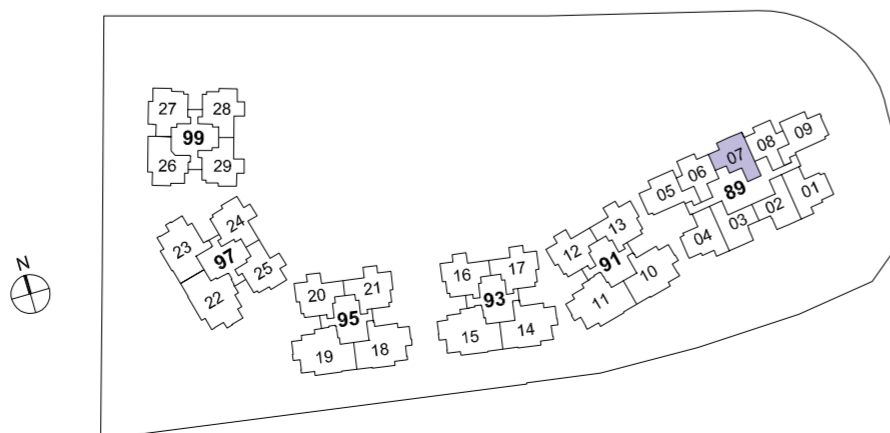
#02-02 to #12-02*

#02-03 to #12-03

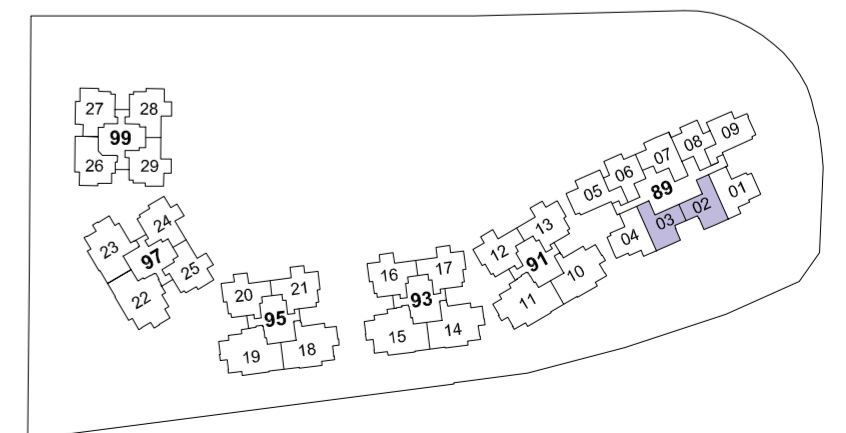
* Mirror Unit



showflat +65 61002500



The plans are subjected to change as may required or approved by the relevant authorities. Areas are estimates only and subject to final survey. Plans are not drawn to scale and do not form part of the contract.



The plans are subjected to change as may required or approved by the relevant authorities. Areas are estimates only and subject to final survey. Plans are not drawn to scale and do not form part of the contract.

2 - BEDROOM CLASSIC

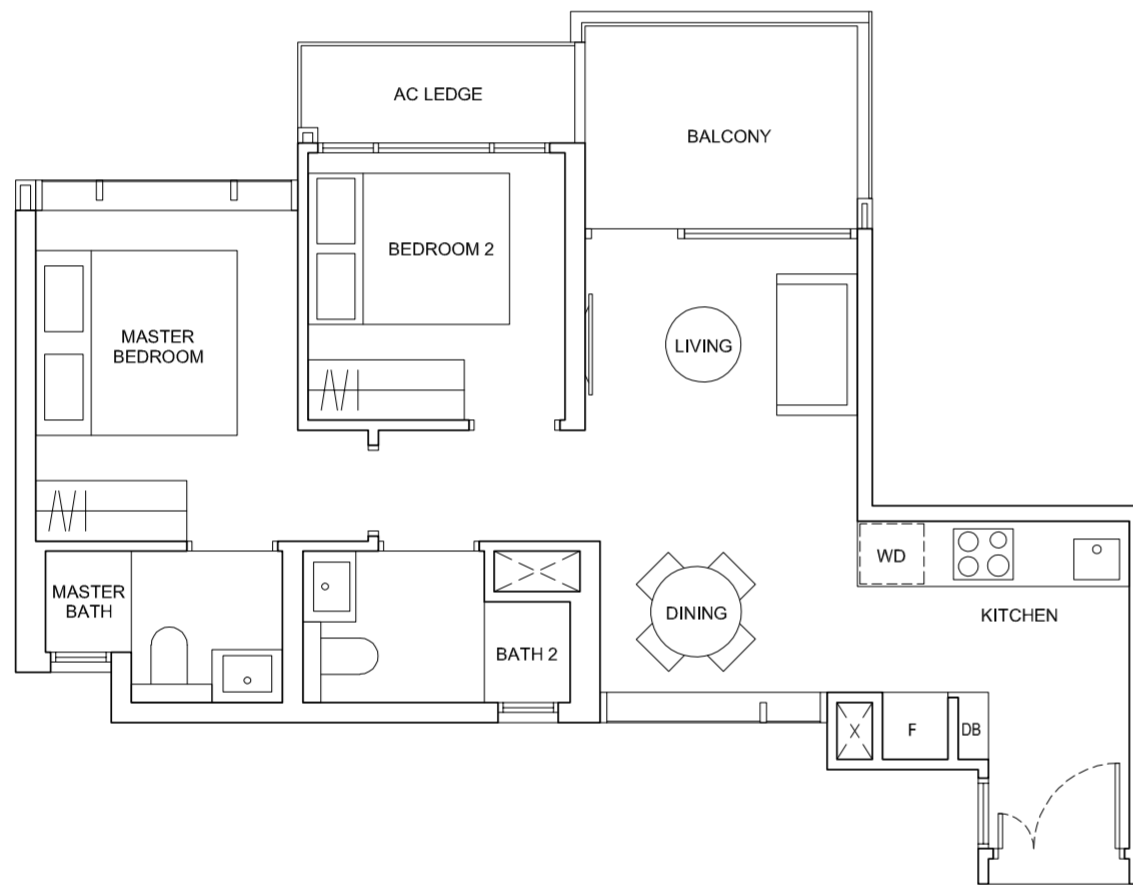
TYPE C1

61 sqm / 657 sqft

#02-05 to #12-05

#02-09 to #12-09*

* Mirror Unit



2 - BEDROOM CLASSIC

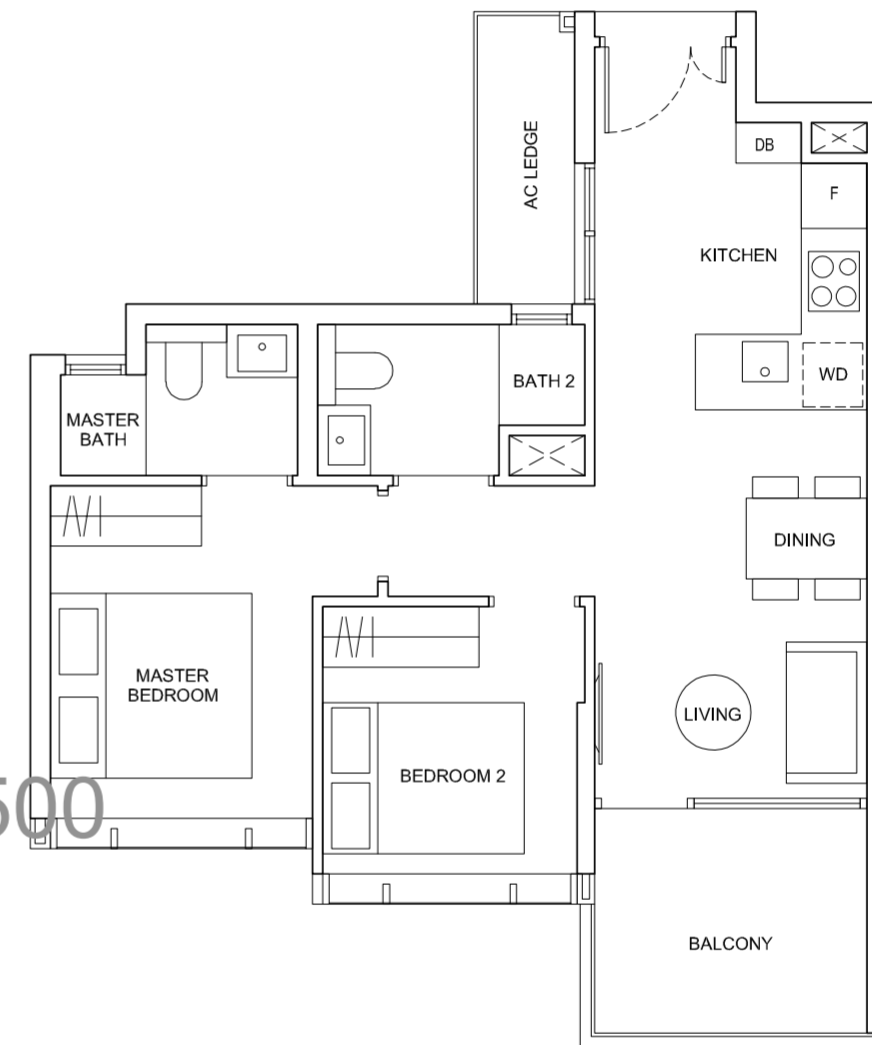
TYPE C2

61 sqm / 657 sqft

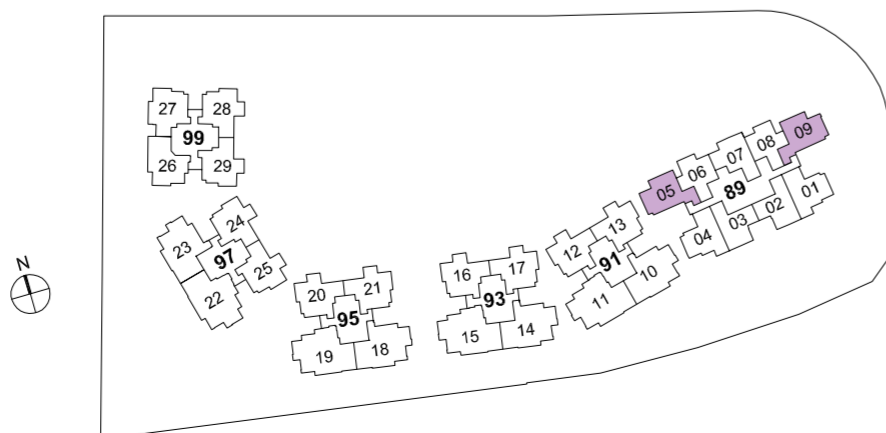
#02-01 to #12-01*

#02-04 to #12-04

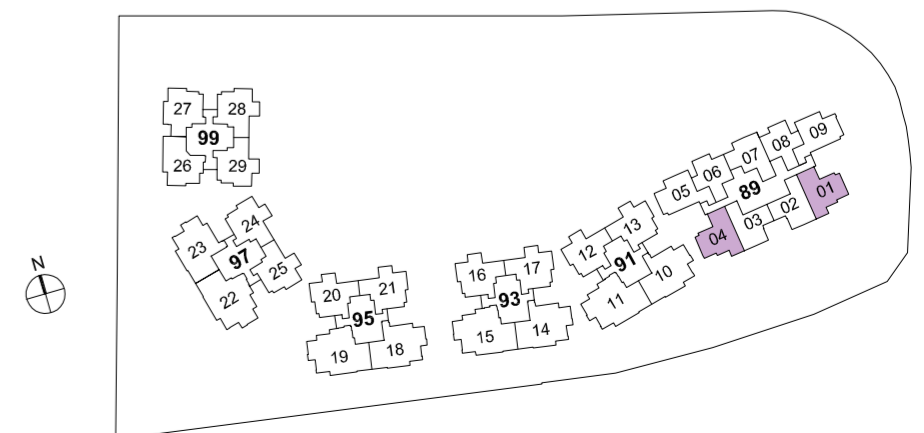
* Mirror Unit



showflat +65 61002500



The plans are subjected to change as may required or approved by the relevant authorities. Areas are estimates only and subject to final survey. Plans are not drawn to scale and do not form part of the contract.



The plans are subjected to change as may required or approved by the relevant authorities. Areas are estimates only and subject to final survey. Plans are not drawn to scale and do not form part of the contract.

2 - BEDROOM DELUXE

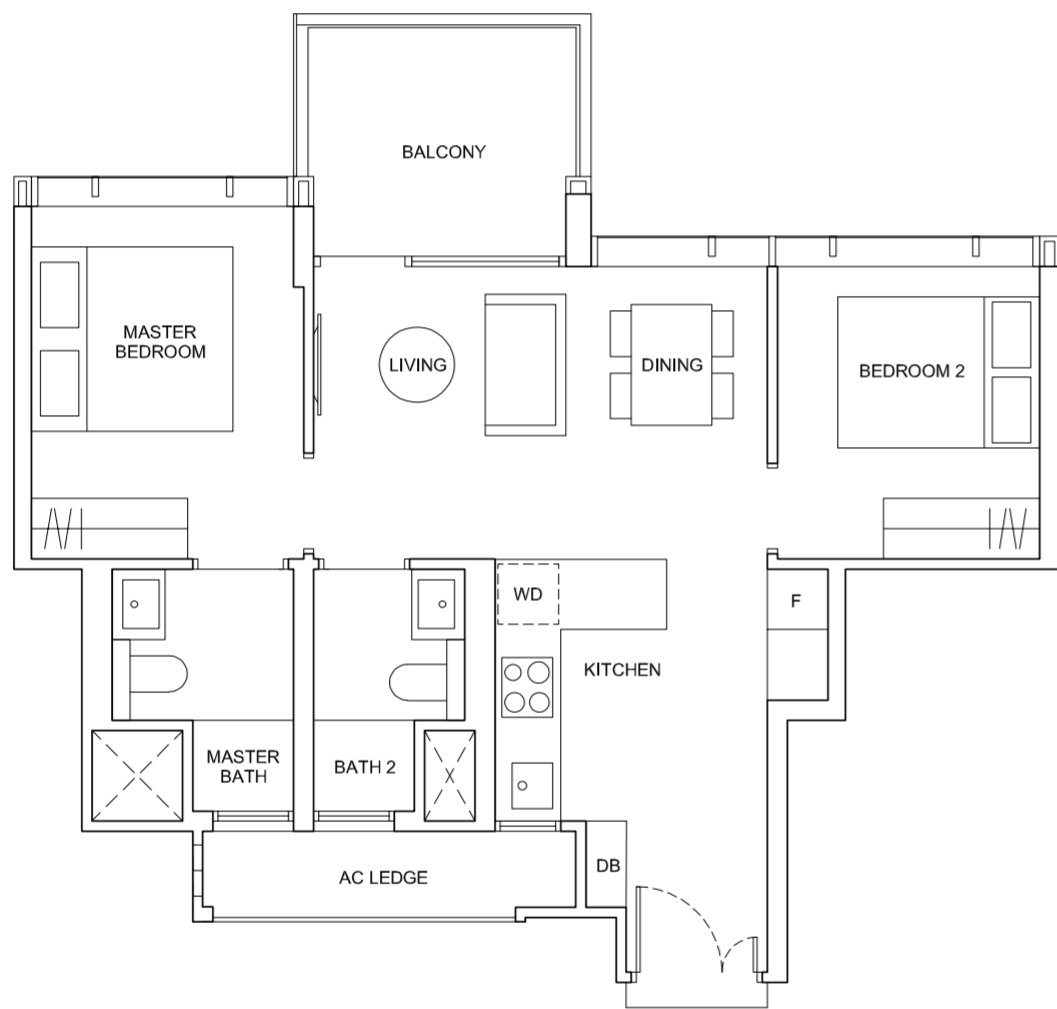
TYPE D1

65 sqm / 700 sqft

- #02-12 to #12-12
- #02-13 to #12-13*
- #02-16 to #12-16
- #02-17 to #12-17*
- #02-20 to #12-20
- #02-21 to #12-21*

- #02-24 to #12-24
- #02-25 to #12-25*
- #02-28 to #12-28
- #02-29 to #12-29*

* Mirror Unit



2 - BEDROOM DELUXE

TYPE D2

66 sqm / 710 sqft

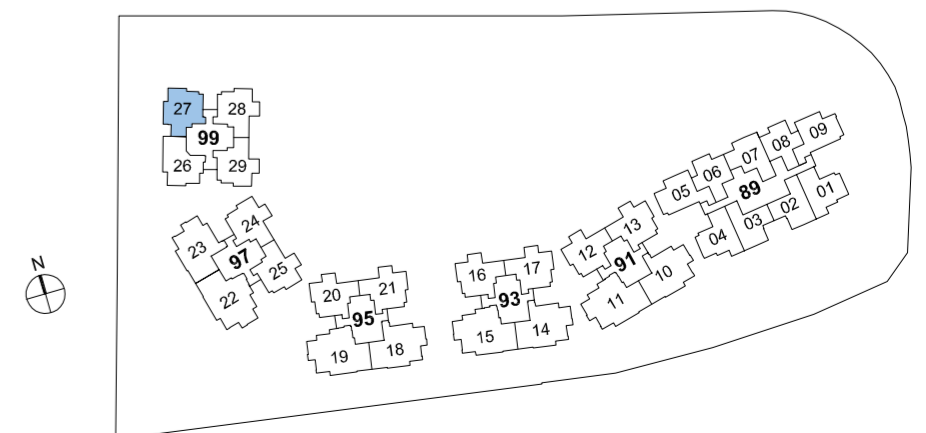
- #02-27 to #12-27



showflat +65 61002500



The plans are subjected to change as may required or approved by the relevant authorities. Areas are estimates only and subject to final survey. Plans are not drawn to scale and do not form part of the contract.



The plans are subjected to change as may required or approved by the relevant authorities. Areas are estimates only and subject to final survey. Plans are not drawn to scale and do not form part of the contract.

2 - BEDROOM DELUXE

TYPE D3

67 sqm / 721 sqft

#02-26 to #12-26



3 - BEDROOM DELUXE

TYPE E

87 sqm / 936 sqft

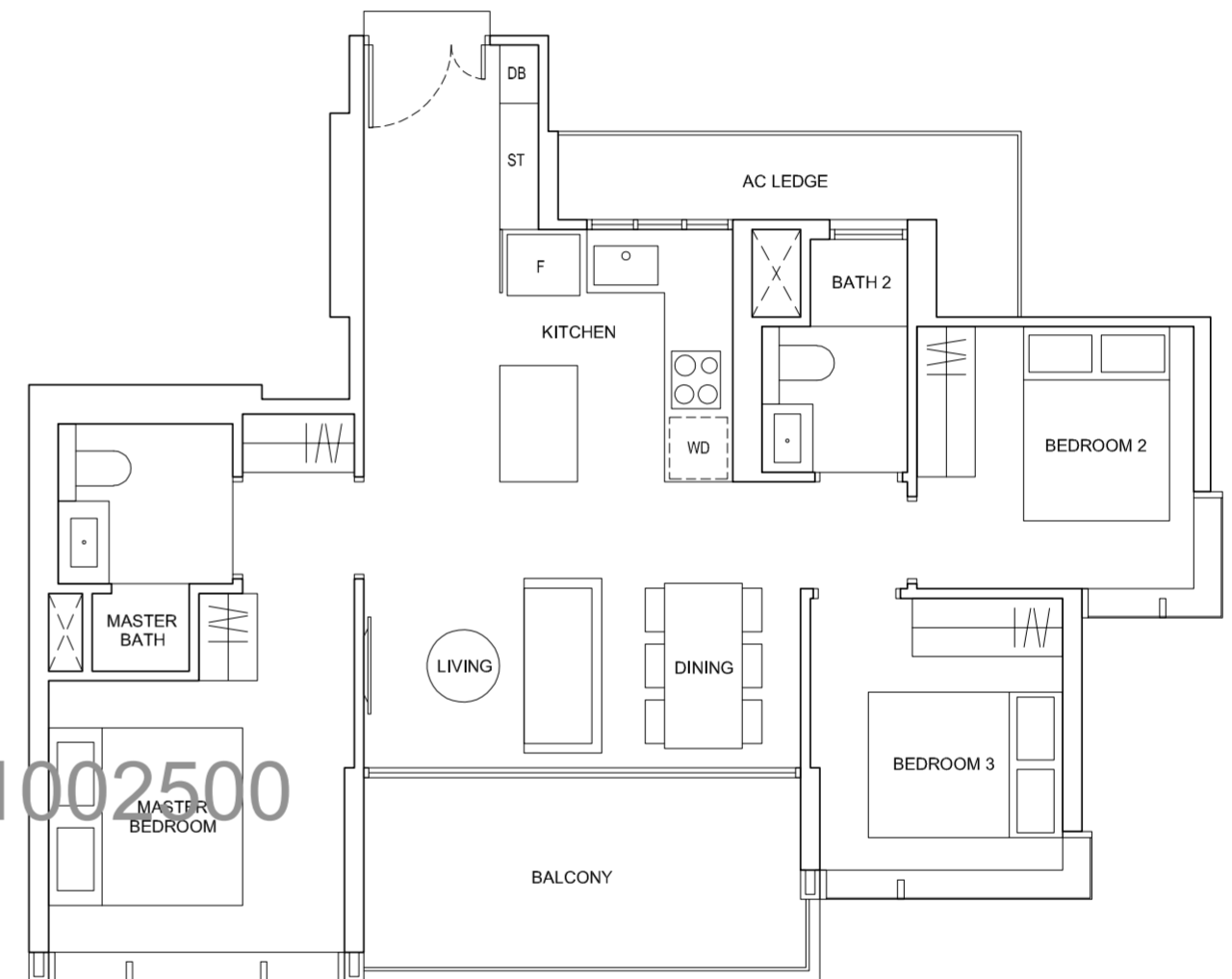
#02-10 to #12-10

#02-14 to #12-14

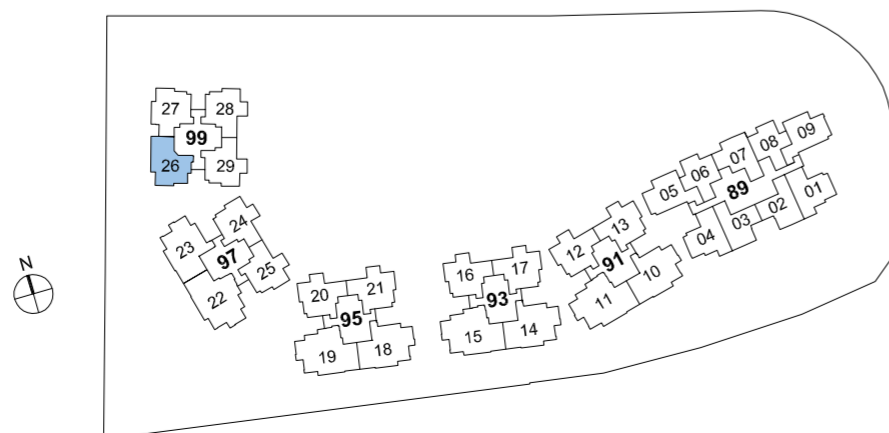
#02-18 to #12-18

#02-23 to #12-23*

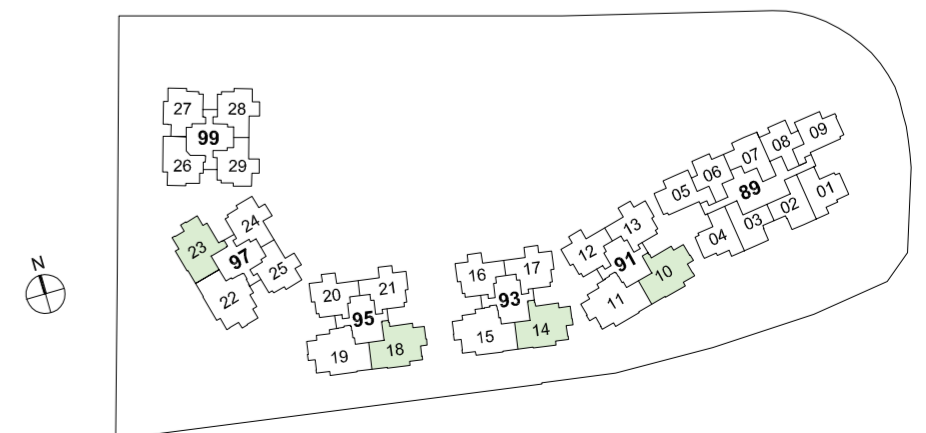
* Mirror Unit



showflat +65 61002500



The plans are subjected to change as may required or approved by the relevant authorities. Areas are estimates only and subject to final survey. Plans are not drawn to scale and do not form part of the contract.



The plans are subjected to change as may required or approved by the relevant authorities. Areas are estimates only and subject to final survey. Plans are not drawn to scale and do not form part of the contract.

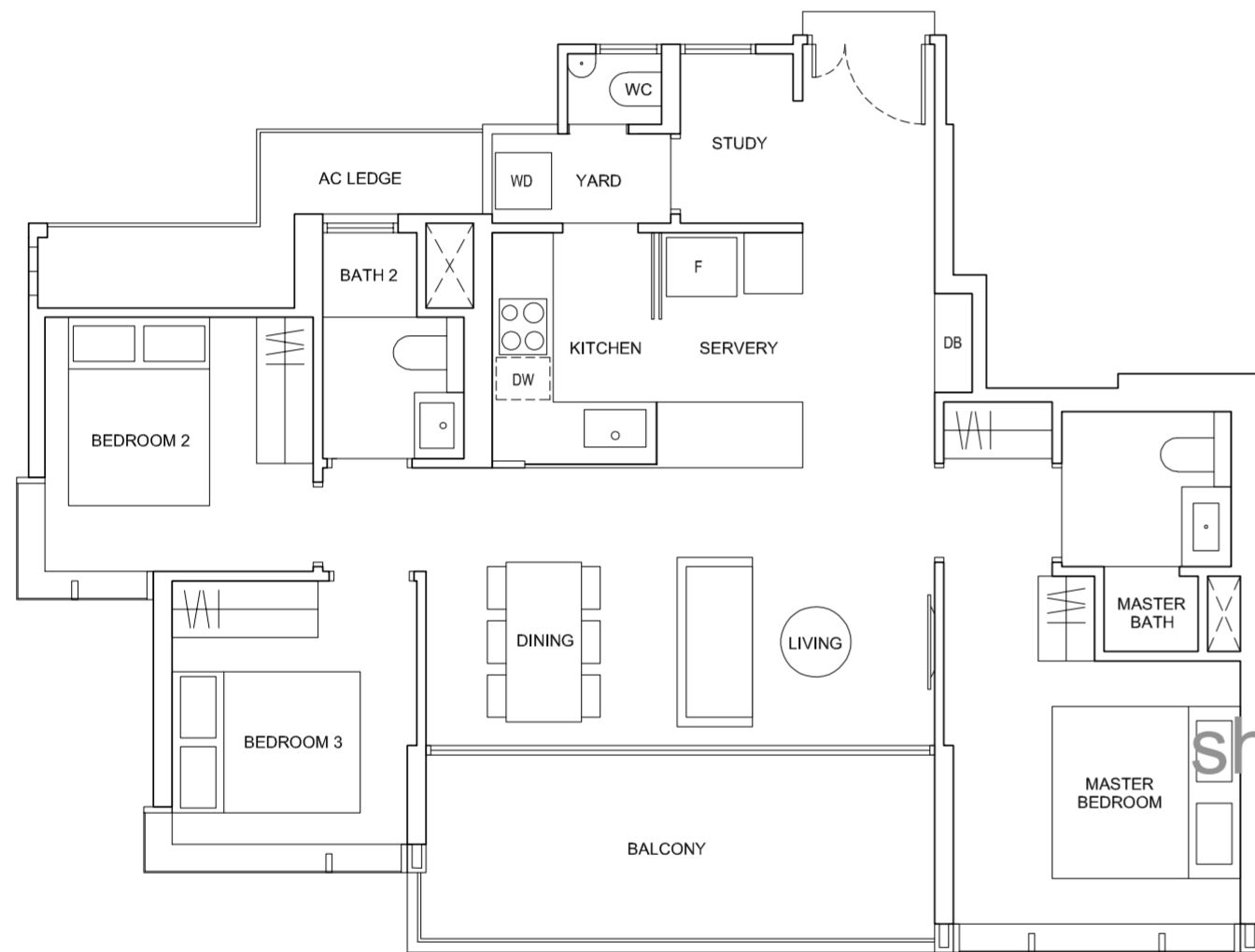
3 - BEDROOM + STUDY DELUXE

TYPE F

98 sqm / 1,055 sqft

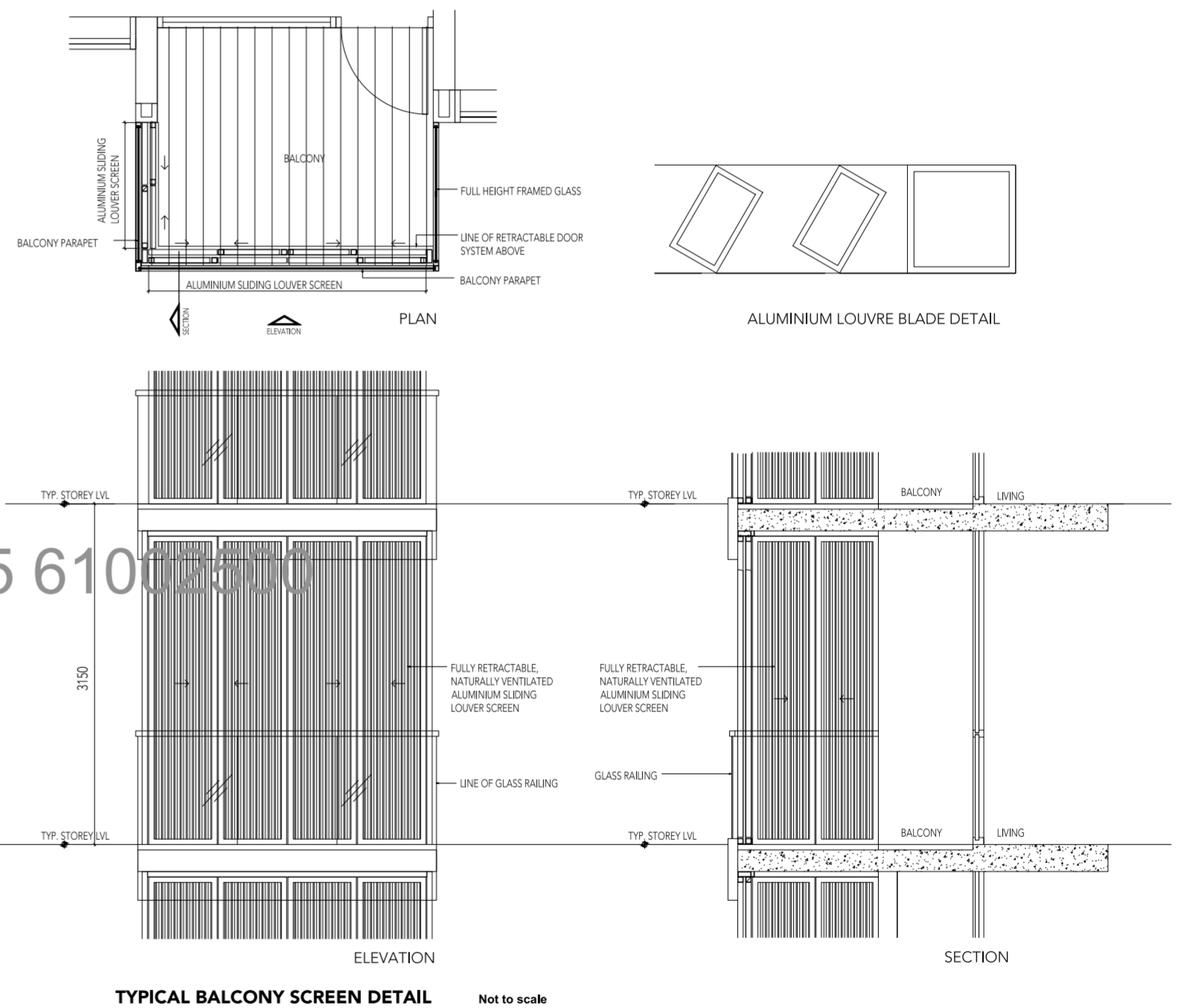
- #02-11 to #12-11
- #02-15 to #12-15
- #02-19 to #12-19
- #02-22 to #12-22*

* Mirror Unit



BALCONY SCREEN

The balcony shall not be enclosed unless with the approved balcony screen. For an illustration of the approved balcony screen, please see below:-



The plans are subjected to change as may required or approved by the relevant authorities. Areas are estimates only and subject to final survey. Plans are not drawn to scale and do not form part of the contract.



*This drawing is for reference only. The screen design is provided for aesthetic uniformity of the development. Materials to be of aluminum with powder coated finish. Total free opening for screen shall not be less than 50% of the panel. Fixing detail by contractor, and fixing shall not damage waterproofing or existing structure. The installation and cost of the screen shall be borne by the Purchaser. The Purchaser shall verify all dimensions prior to commencement of work. Drawing not to scale, and none can be regarded as representation of fact. The Purchaser is required to refer to the Management for any additional details.



Far East Consortium International Limited has been listed on the Hong Kong Stock Exchange since 1972 (HKEx stock code: 00035). The Group is mainly engaged in property development and investment, hotel operations and management, car park operations and facilities management and gaming operations. The Group is well diversified across geographies with operations in Hong Kong, Mainland China, Australia, New Zealand, Malaysia, Singapore, the United Kingdom and other European countries. The Group follows a clear "Asian Wallet" strategy, aiming to benefit from the growth in consumption and investment from the expanding Asian middle-class.



KOH BROTHERS
DEVELOPMENT
PTE LTD

 A MEMBER OF KOH BROTHERS GROUP LIMITED



showflat +65 61002500

Established in 1993, Koh Brothers Development (KBD) provides quality property developments with specialised lifestyle themes at choice locations. Koh Brothers has managed to carve a niche in developing themed properties that are innovative and promote healthy lifestyle. Amongst its many successes, there is the 175-unit Lincoln Suites off Newton Road, the 53-unit Lumos development at Leonie Hill, Montana and Starville. Some of our recently completed development projects include the development of Singapore's first bike-themed Executive Condominium (EC) at Westwood Avenue, as well as the 486-unit Parc Olympia Condominium at Flora Drive. Current projects include Nonhyeon IPARK at Gangnam, South Korea.